

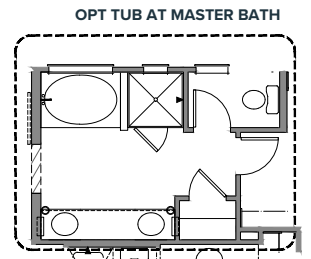
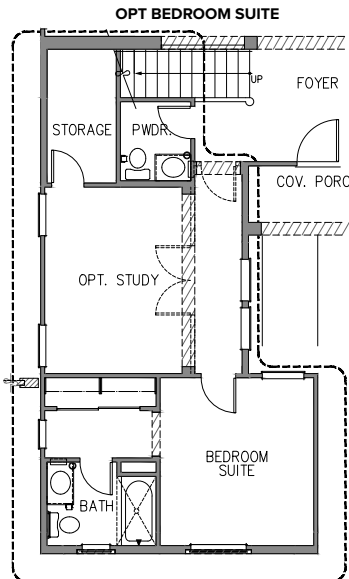
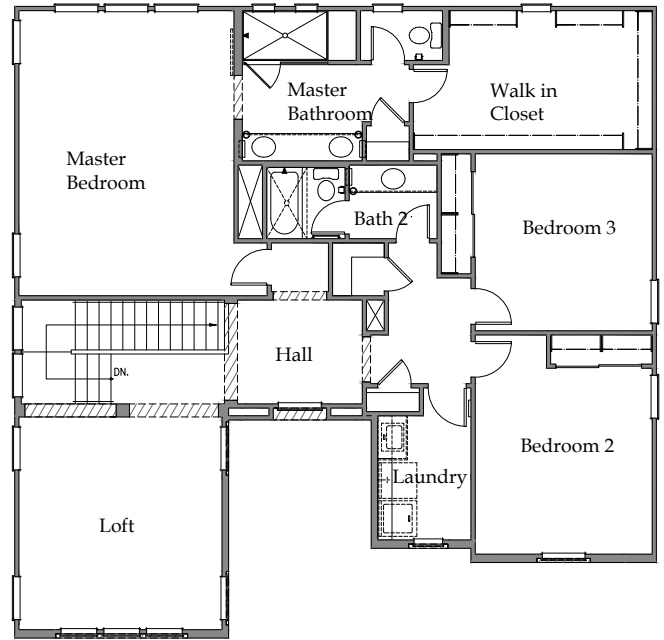
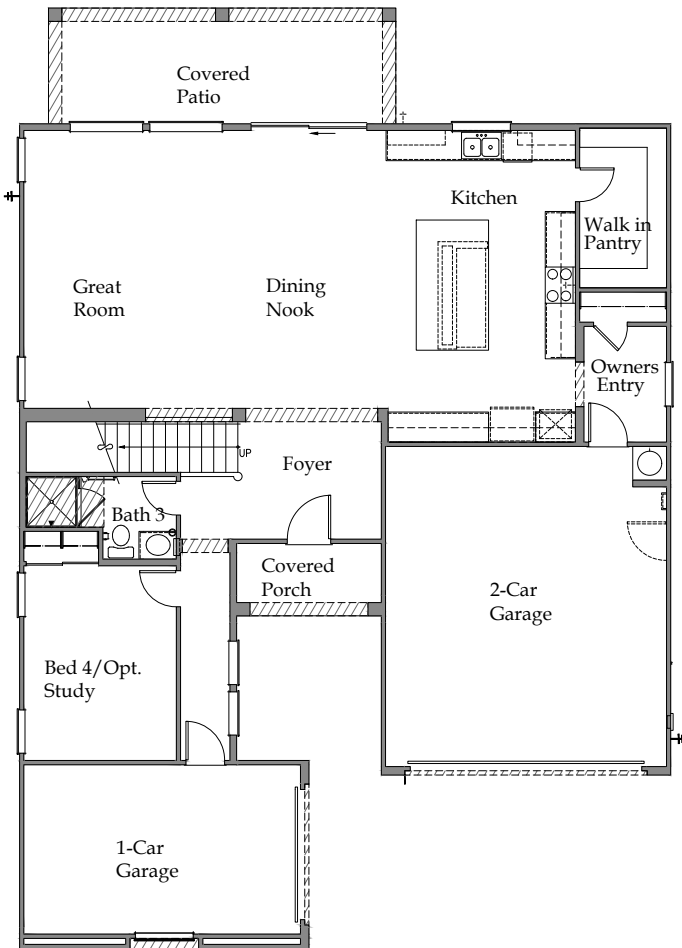


# PORCHLIGHT HOMES

## THE HIGHLINE

### RESIDENCE THREE

4 Bedrooms | 3 Baths | 3,130 SQ FT | 3-Car Garage



3145 E Magdalena Ln | Phoenix, AZ 85042 | porchlighthomes.com  
Sales by LYS Properties | 480-519-5128



The document is for informational purposes only and no representation is made by Porchlight Homes to the accuracy of the information stated herein. Prices and promotions subject to change without notice. No offer for sale or lease can be made and no offer to purchase can be accepted prior to issuance of the final Arizona Public Report. All prospective buyers, real estate agents or other parties are solely responsible for verifying any and all information included herein.



# PORCHLIGHT HOMES

## THE **HIGHLINE**

### RESIDENCE THREE

4 Bedrooms | 3 Baths | 3,130 SQ FT | 3-Car Garage



3145 E Magdalena Ln | Phoenix, AZ 85042 | [porchlighthomes.com](http://porchlighthomes.com)  
Sales by LYS Properties | 480-519-5128



The document is for informational purposes only and no representation is made by Porchlight Homes to the accuracy of the information stated herein. Prices and promotions subject to change without notice. No offer for sale or lease can be made and no offer to purchase can be accepted prior to issuance of the final Arizona Public Report. All prospective buyers, real estate agents or other parties are solely responsible for verifying any and all information included herein.