

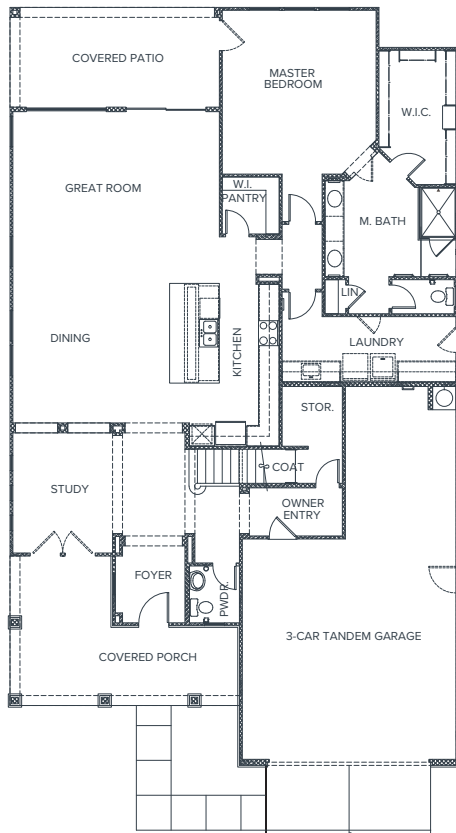


# PORCHLIGHT HOMES

## LAZY DAY MANOR

### RESIDENCE THREE

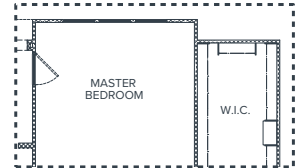
3 Bedrooms | 2.5 Baths | 2905 SQ FT | 3-Car Garage



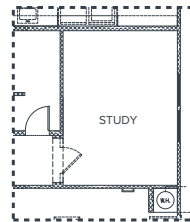
FLOOR 1



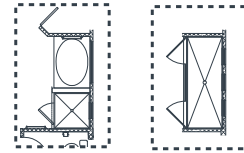
OPTIONAL  
EXTENDED PATIO



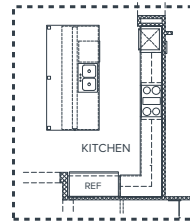
OPTIONAL EXTENDED MASTER  
BEDROOM AND W.I.C.



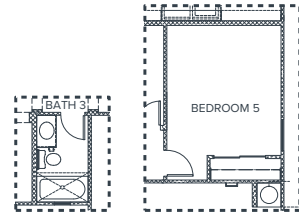
OPTIONAL STUDY  
WITH TANDEM GARAGE



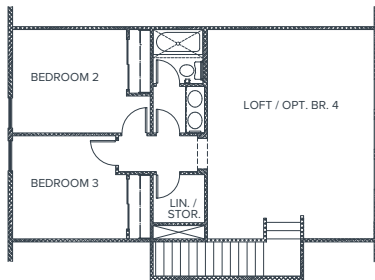
OPTIONAL MASTER  
BATHROOM SHOWERS



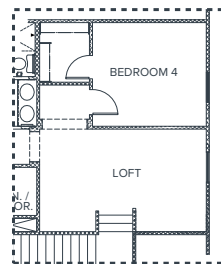
OPTIONAL  
LUXURY KITCHEN



OPTIONAL BEDROOM 5  
AND BATHROOM 3



FLOOR 2



OPTIONAL FLOOR 2  
BEDROOM 4

7272 N 15th Avenue | Phoenix, AZ 85021 | porchlighthomes.com  
Sales by LYS Properties, LLC | 480 519 5128



The document is for informational purposes only and no representation is made by Porchlight Homes to the accuracy of the information stated herein. Prices and promotions subject to change without notice. No offer for sale or lease can be made and no offer to purchase can be accepted prior to issuance of the final Arizona Public Report. All prospective buyers, real estate agents or other parties are solely responsible for verifying any and all information included herein.



# PORCHLIGHT HOMES

## LAZY DAY MANOR

### RESIDENCE THREE

3 Bedrooms | 2.5 Baths | 2905 SQ FT | 3-Car Garage

CRAFTSMAN BUNGALOW



DESERT RANCH



7272 N 15th Avenue | Phoenix, AZ 85021 | [porchlighthomes.com](http://porchlighthomes.com)  
Sales by LYS Properties, LLC | 480 519 5128



The document is for informational purposes only and no representation is made by Porchlight Homes to the accuracy of the information stated herein. Prices and promotions subject to change without notice. No offer for sale or lease can be made and no offer to purchase can be accepted prior to issuance of the final Arizona Public Report. All prospective buyers, real estate agents or other parties are solely responsible for verifying any and all information included herein.