



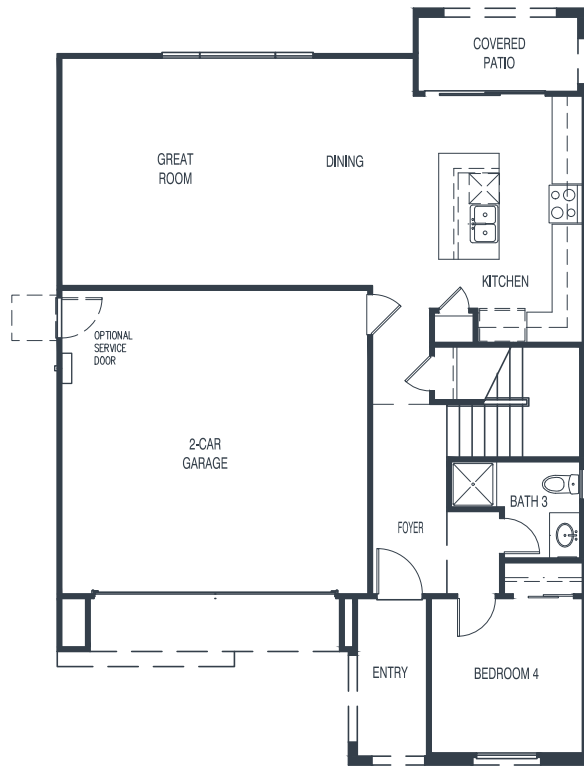
PORCHLIGHT HOMES

EASTPOINT

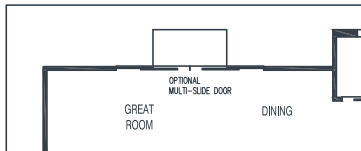
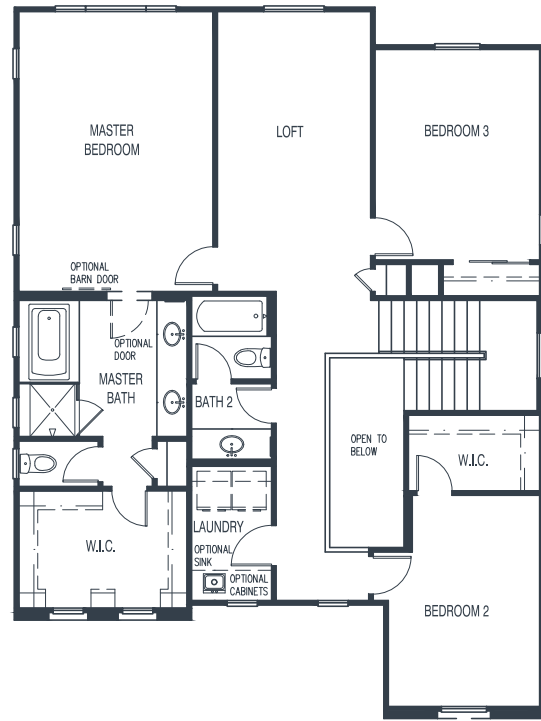
RESIDENCE THREE

4 Bedrooms | 3 Bath | 2225 SQ FT | 2-Car Garage

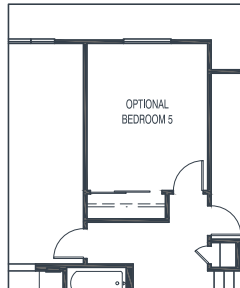
FIRST FLOOR



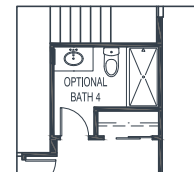
SECOND FLOOR



OPTIONAL MULTI-SLIDE GLASS DOORS



OPTIONAL BEDROOM



OPTIONAL BATHROOM

4711 E Aspen Way | Gilbert, AZ 85234 | porchlighthomes.com
Sales by LYS Properties, LLC | 480 930 2244



The document is for informational purposes only and no representation is made by Porchlight Homes to the accuracy of the information stated herein. Prices and promotions subject to change without notice. No offer for sale or lease can be made and no offer to purchase can be accepted prior to issuance of the final Arizona Public Report. All prospective buyers, real estate agents or other parties are solely responsible for verifying any and all information included herein.



PORCHLIGHT HOMES

EASTPOINT

RESIDENCE THREE

4 Bedrooms | 3 Bath | 2225 SQ FT | 2-Car Garage



4711 E Aspen Way | Gilbert, AZ 85234 | porchlighthomes.com
Sales by LYS Properties, LLC | 480 930 2244



The document is for informational purposes only and no representation is made by Porchlight Homes to the accuracy of the information stated herein. Prices and promotions subject to change without notice. No offer for sale or lease can be made and no offer to purchase can be accepted prior to issuance of the final Arizona Public Report. All prospective buyers, real estate agents or other parties are solely responsible for verifying any and all information included herein.