

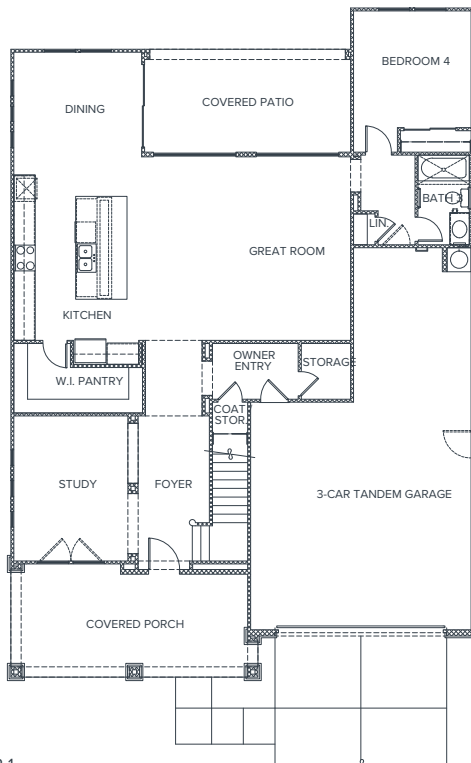


# PORCHLIGHT HOMES

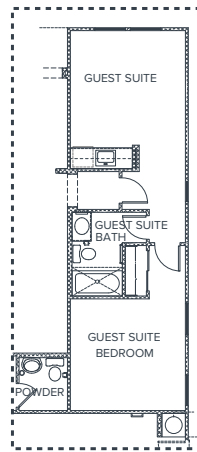
## LAZY DAY MANOR

### RESIDENCE FOUR

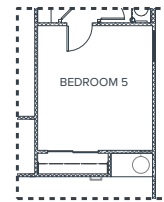
4 Bedrooms | 3 Baths | 3181 SQ FT | 3-Car Garage



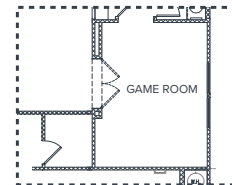
FLOOR 1



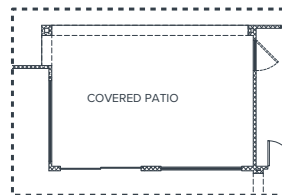
OPTIONAL GUEST SUITE AT TANDEM GARAGE



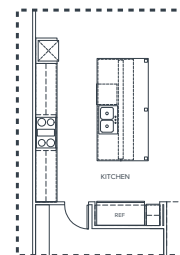
OPTIONAL BEDROOM 5 AT TANDEM GARAGE



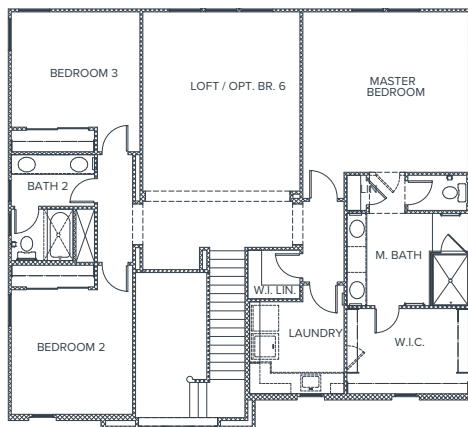
OPTIONAL GAME ROOM



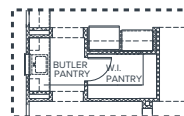
OPTIONAL EXTENDED PATIO



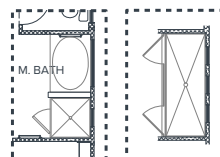
OPTIONAL LUXURY KITCHEN



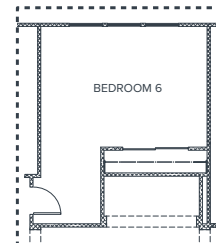
FLOOR 2



OPTIONAL BUTLER'S PANTRY



FLOOR 2 OPTIONAL MASTER BATH SHOWERS



FLOOR 2 OPTIONAL BEDROOM

7272 N 15th Avenue | Phoenix, AZ 85021 | porchlighthomes.com  
Sales by LYS Properties, LLC | 480 519 5128



The document is for informational purposes only and no representation is made by Porchlight Homes to the accuracy of the information stated herein. Prices and promotions subject to change without notice. No offer for sale or lease can be made and no offer to purchase can be accepted prior to issuance of the final Arizona Public Report. All prospective buyers, real estate agents or other parties are solely responsible for verifying any and all information included herein.



# PORCHLIGHT HOMES

## LAZY DAY MANOR

### RESIDENCE FOUR

4 Bedrooms | 3 Baths | 3181 SQ FT | 3-Car Garage

CRAFTSMAN BUNGALOW



DESERT RANCH



7272 N 15th Avenue | Phoenix, AZ 85021 | [porchlighthomes.com](http://porchlighthomes.com)  
Sales by LYS Properties, LLC | 480 519 5128



The document is for informational purposes only and no representation is made by Porchlight Homes to the accuracy of the information stated herein. Prices and promotions subject to change without notice. No offer for sale or lease can be made and no offer to purchase can be accepted prior to issuance of the final Arizona Public Report. All prospective buyers, real estate agents or other parties are solely responsible for verifying any and all information included herein.